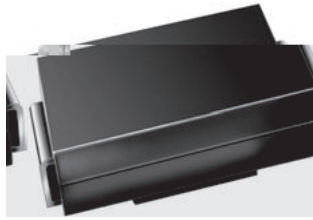


Surface Mount Zero Diode



DO-214AC (SMA)

FEATURES

Plastic package has lead free tin plating
 Lead free classification UL 94 V-0

Forward voltage drop at rated current

Low Zener impedance

Low temperature coefficient

High reverse leakage current at rated voltage:

260 C/10 uA at 5V

Standard package tolerance: 10%, typical A 5%

AEC-Q101 compliant

Material category: Forward voltage drop of capacitor
 Reverse leakage www.vishay.com/doc?99912



RoHS COMPLIANT

PRIMARY CHARACTERISTICS		
PARAMETER	VALUE	UNIT
Vz tapge pgo	3.3 q 100	V
Teu c ttep I _{ZT}	2.5 q 76	o A
Vz ur ecifica iqp	P ue c ttep	
Ip . ccpu t c iqp	Sipg	

MECHANICAL DATA

Base P/N-E3 - RqHS-cqo r rap , cqo o etcia gtade

Base P/NHE3 - RqHS-cqo r rap , AEC-Q101 s aified

ORDERING INFORMATION			
DEVICE NAME	ORDERING CODE	TAPED UNITS PER REEL	MINIMUM ORDER QUANTITY
SML4728 q SML4764A	SML4728-E3/5A SML4728HE3/5A	7500 (12 o o ar e qp 13" r au ic tee)	
SML4728 q SML4764A	SML4728-E3/61 SML4728HE3/61	1800 (12 o o ar e qp 7" r au ic tee)	

PACKAGE				
PACKAGE NAME	WEIGHT	MOLDING COMPOUND FLAMMABILITY RATING	MOISTURE SENSITIVITY LEVEL	SOLDERING CONDITIONS
DO-214AC	64 o g	UL 94 V-0	MSL e1 (accqtdipg J-STD-020)	260 C/10 uA eto ipa

ABSOLUTE MAXIMUM RATINGS (T _{ao b} = 25 C, p u u q het iue ur ecified)					
PARAMETER	TEST CONDITION	SYMBOL	VALUE	UNIT	
Pq et diuir a iqp	T _L = 75 °C	P _q	1000	o W	
J pc iqp eo r eta te		T _j	150	C	
S qtage eo r eta te tapge		T _{ug}	- 65 q + 150	C	

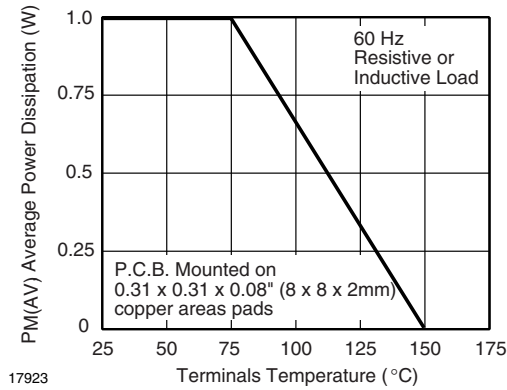


ELECTRICAL CHARACTERISTICS ($T_{ao b} = 25\text{ C}$, p _o u q het iue ur ecified)									
PART NUMBER	MARKING CODE	ZENER VOLTAGE RANGE	TEST CURRENT		REVERSE CURRENT		DYNAMIC RESISTANCE		SURGE CURRENT (1)
		V_Z a I_{ZT1}	I_{ZT1}	I_{ZT2}	I_R a V_R	Z_z a I_{ZT1}	Z_{ZK} a I_{ZT2}	I_{RM}	
		V	A		A	V	Ω		A _{pk}
		NOM.			MAX.		MAX.	MAX.	MAX.
SML4728	3P3	3.3	76	1	100	1	10	400	1380
SML4729	3P6	3.6	69	1	100	1	10	400	1260
SML4730	3P9	3.9	64	1	50	1	9	400	1190
SML4731	4P3	4.3	58	1	10	1	9	400	1070
SML4732	4P7	4.7	53	1	10	1	8	500	970
SML4733	5P1	5.1	49	1	10	1	7	550	890
SML4734	5P6	5.6	45	1	10	2	5	600	810
SML4735	6P2	6.2	41	1	10	3	2	700	730
SML4736	6P8	6.8	37	1	10	4	3.5	700	660
SML4737	7P5	7.5	34	0.5	10	5	4	700	605
SML4738	8P2	8.2	31	0.5	10	6	4.5	700	550
SML4739	9P1	9.1	28	0.5	10	7	5	700	500
SML4740	10	10	25	0.25	10	7.6	7	700	454
SML4741	11	11	23	0.25	5	8.4	8	700	414
SML4742	12	12	21	0.25	5	9.1	9	700	380
SML4743	13	13	19	0.25	5	9.9	10	700	344
SML4744	15	15	17	0.25	5	11.4	14	700	305
SML4745	16	16	15.5	0.25	5	12.2	16	700	285
SML4746	18	18	14	0.25	5	13.7	20	750	250
SML4747	20	20	12.5	0.25	5	15.2	22	750	225
SML4748	22	22	11.5	0.25	5	16.7	23	750	205
SML4749	24	24	10.5	0.25	5	18.2	25	750	190
SML4750	27	27	9.5	0.25	5	20.6	35	750	170
SML4751	30	30	8.5	0.25	5	22.8	40	1000	150
SML4752	33	33	7.5	0.25	5	25.1	45	1000	135
SML4753	36	36	7	0.25	5	27.4	50	1000	125
SML4754	39	39	6.5	0.25	5	29.7	60	1000	115
SML4755	43	43	6	0.25	5	32.7	70	1500	110
SML4756	47	47	5.5	0.25	5	35.8	80	1500	95
SML4757	51	51	5	0.25	5	38.8	95	1500	90
SML4758	56	56	4.5	0.25	5	42.6	110	2000	80
SML4759	62	62	4	0.25	5	47.1	125	2000	70
SML4760	68	68	3.7	0.25	5	51.7	150	2000	65
SML4761	75	75	3.3	0.25	5	56	175	2000	60
SML4762	82	82	3	0.25	5	62.2	200	3000	55
SML4763	91	91	2.8	0.25	5	69.2	250	3000	50
SML4764	100	100	2.5	0.25	5	76	350	3000	45

NOTES

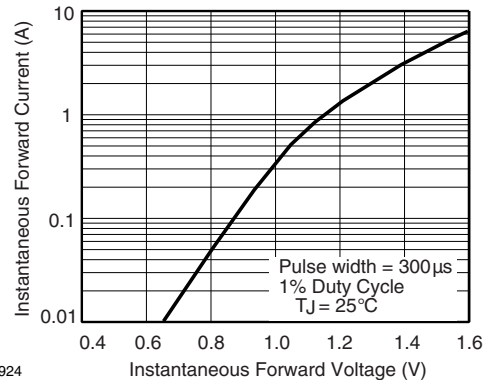
(1) Storage temperature range, 8.3 our. The diodes are tested at a reverse current of I_{ZT} and JEDEC specified

BASIC CHARACTERISTICS ($T_{aob} = 25\text{ }^{\circ}\text{C}$, pæuu q het iue ur ecified)



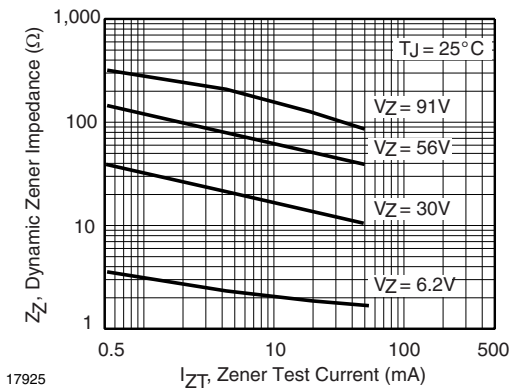
17923

Fig. 1 - Maximum Continuous Power Dissipation



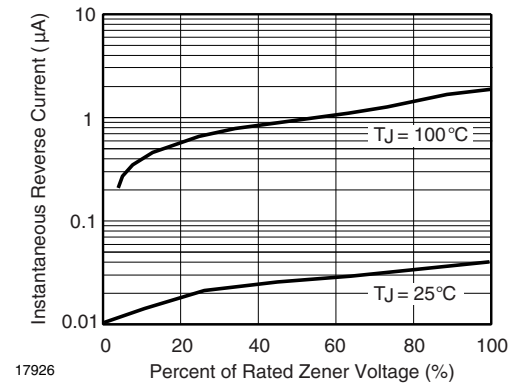
17924

Fig. 4 - Typical Instantaneous Forward Characteristics for SML4763



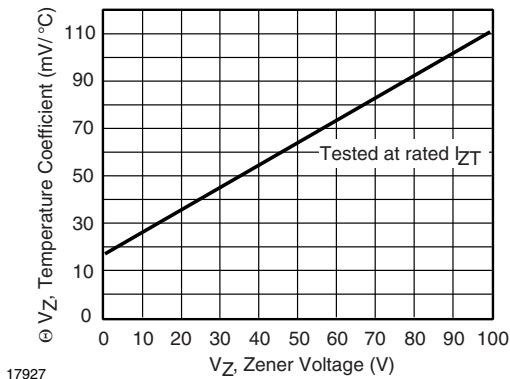
17925

Fig. 2 - Typical Zener Impedance



17926

Fig. 5 - Typical Reverse Characteristics

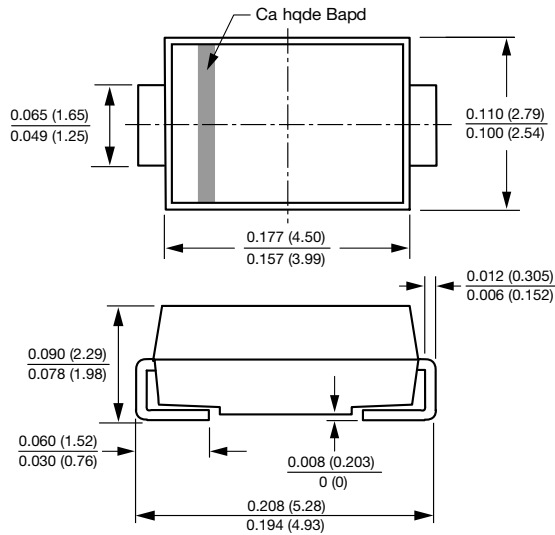


17927

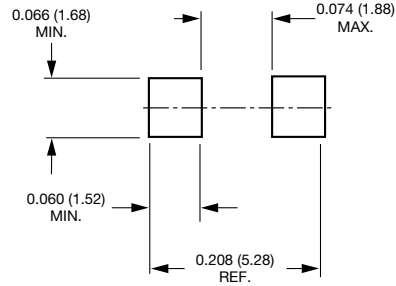
Fig. 3 - Typical Temperature Coefficients

PACKAGE DIMENSIONS ip o e etu (ipcheu): **DO-214AC**

DO-214AC (SMA)



Mg Pad La





Disclosure and

ALL PRODUCTS, PRODUCTS SPECIFICATION AND DATA ARE SUBJECT TO CHANGE WITHOUT NOTICE OR IMPROVED RELIABILITY, PERFORMANCE OR OTHERWISE.

... (. . .) ,
) ,
()
()
P A
E
C
N

Mandatory Compliance Policy

Vishay Intertechnology, Inc. hereby certifies that all products are identified as RoHS-Compliant and are free of the definition and restriction defined under Directive 2011/65/EU of The European Parliament and of the Council of July 8, 2011 on the restriction of the use of certain hazardous substances in electrical and electronic equipment (EEE) - therefore, we are not aware of any RoHS-compliant products.

Please note that Vishay products are also compliant with RoHS Directive 2002/95/EC. We certify that all products are identified as being RoHS-compliant under Directive 2002/95/EC and Directive 2011/65/EU.

Vishay Intertechnology, Inc. hereby certifies that all products are identified as Halogen-Free and are free of the restriction defined under JEDEC JS709A standard. Please note that Vishay products are also compliant with the IEC 61249-2-21 definition. We certify that all products are identified as being RoHS-compliant under IEC 61249-2-21 and JEDEC JS709A standard.